



# PIANO URBANISTICO GENERALE

COMUNE DI ALTA VAL TIDONE

PROVINCIA DI PIACENZA

committente

*Amministrazione Comunale di Alta Val Tidone*

sindaco e assessore all'urbanistica

*dott. Franco Albertini*

ufficio di piano

*geom. Gabriele Valorosi*

*arch. Lara Braga*

progettista

*dott. arch. Filippo Albonetti*

collaboratori

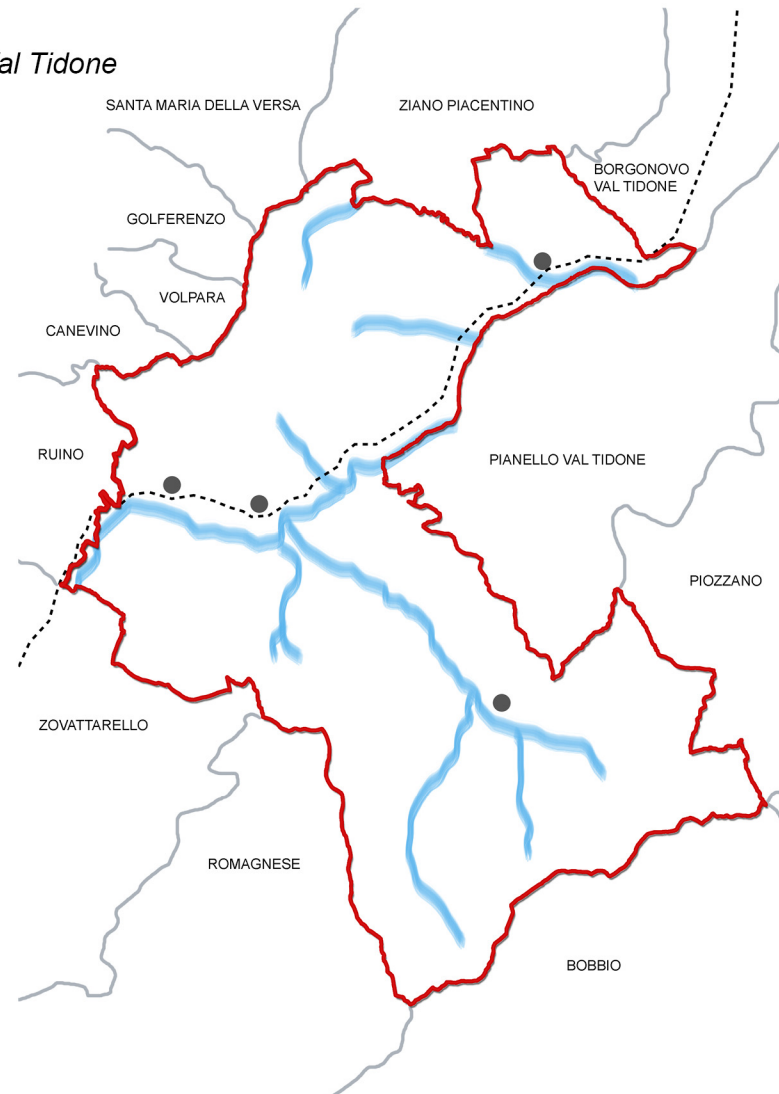
*dott. arch. Laura Gazzola*

*dott. Giacomo Uguccioni*

*dott. arch. Matteo Tagliaferri*

Valsat e Analisi geologiche

*dott. geol. Gabriele Corbelli*



## QUADRO CONOSCITIVO

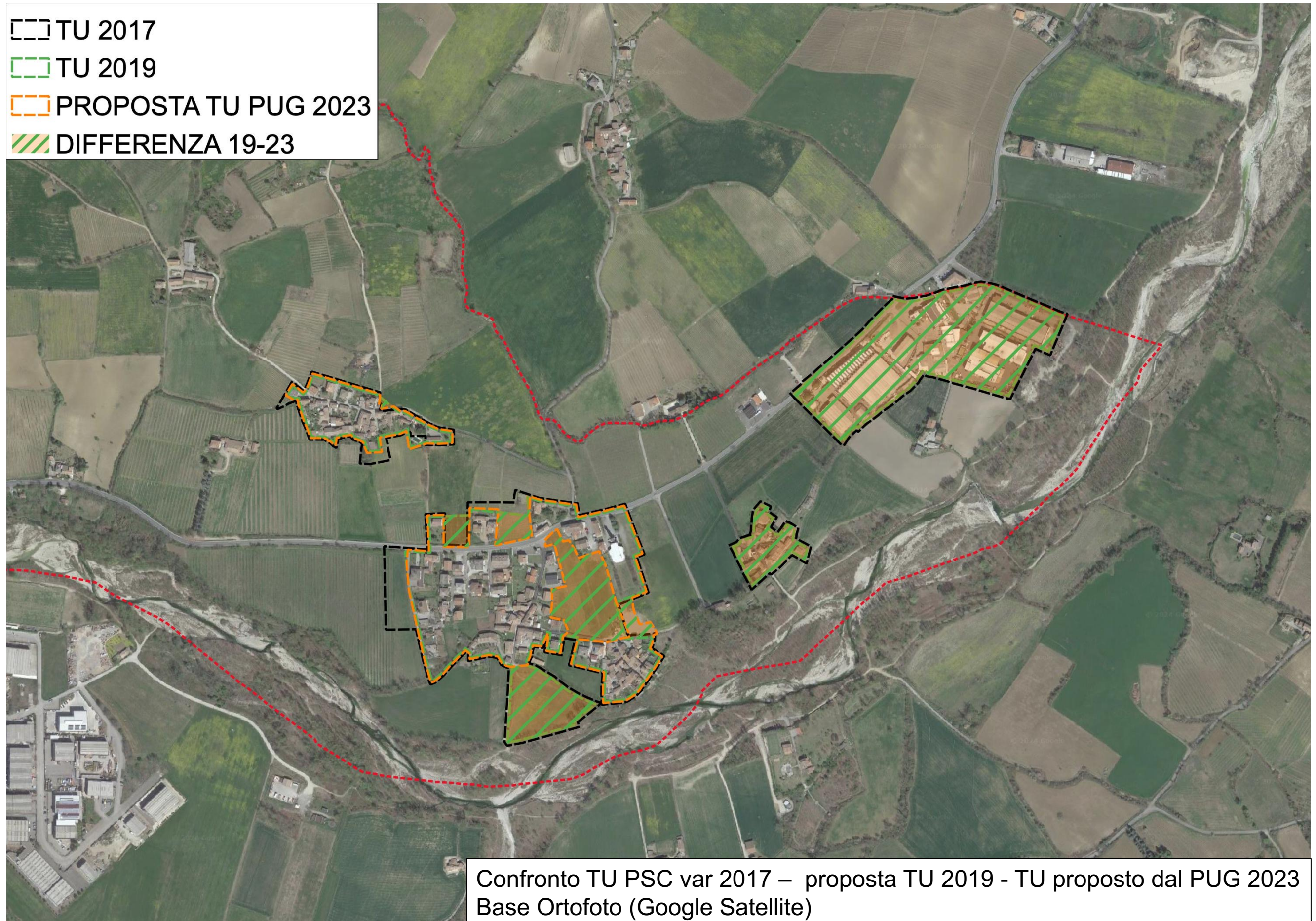
Rev. 01 -  
Rev. 02 -  
Rev. 03 -

**ALLEGATO INTEGRATIVO AL QUADRO CONOSCITIVO -  
REVISIONE DEI TERRITORI URBANIZZATI RISPONDENTI ALL' ART. 32 L.R. 24/17**

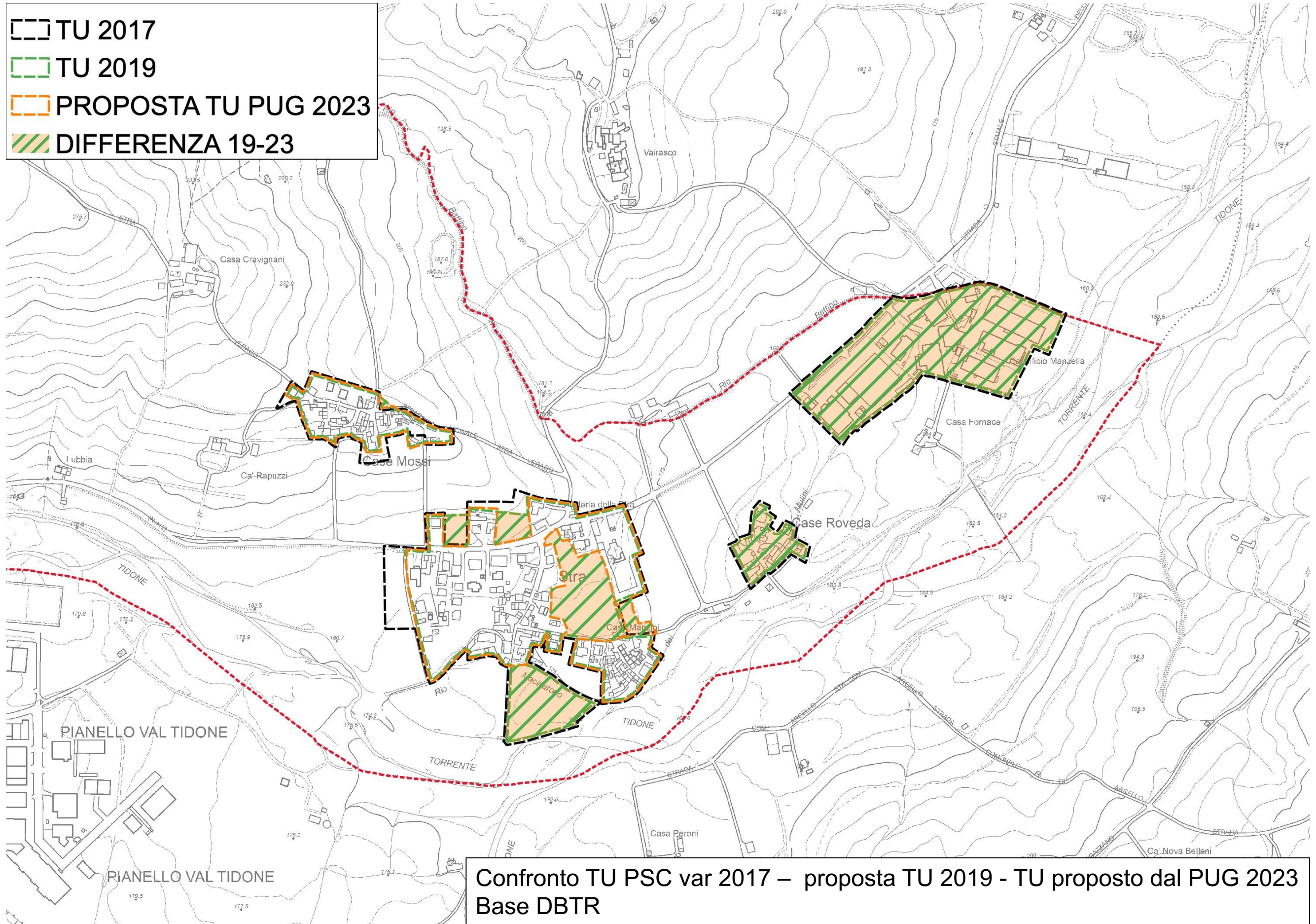
gennaio 2024

**QC\_R8**

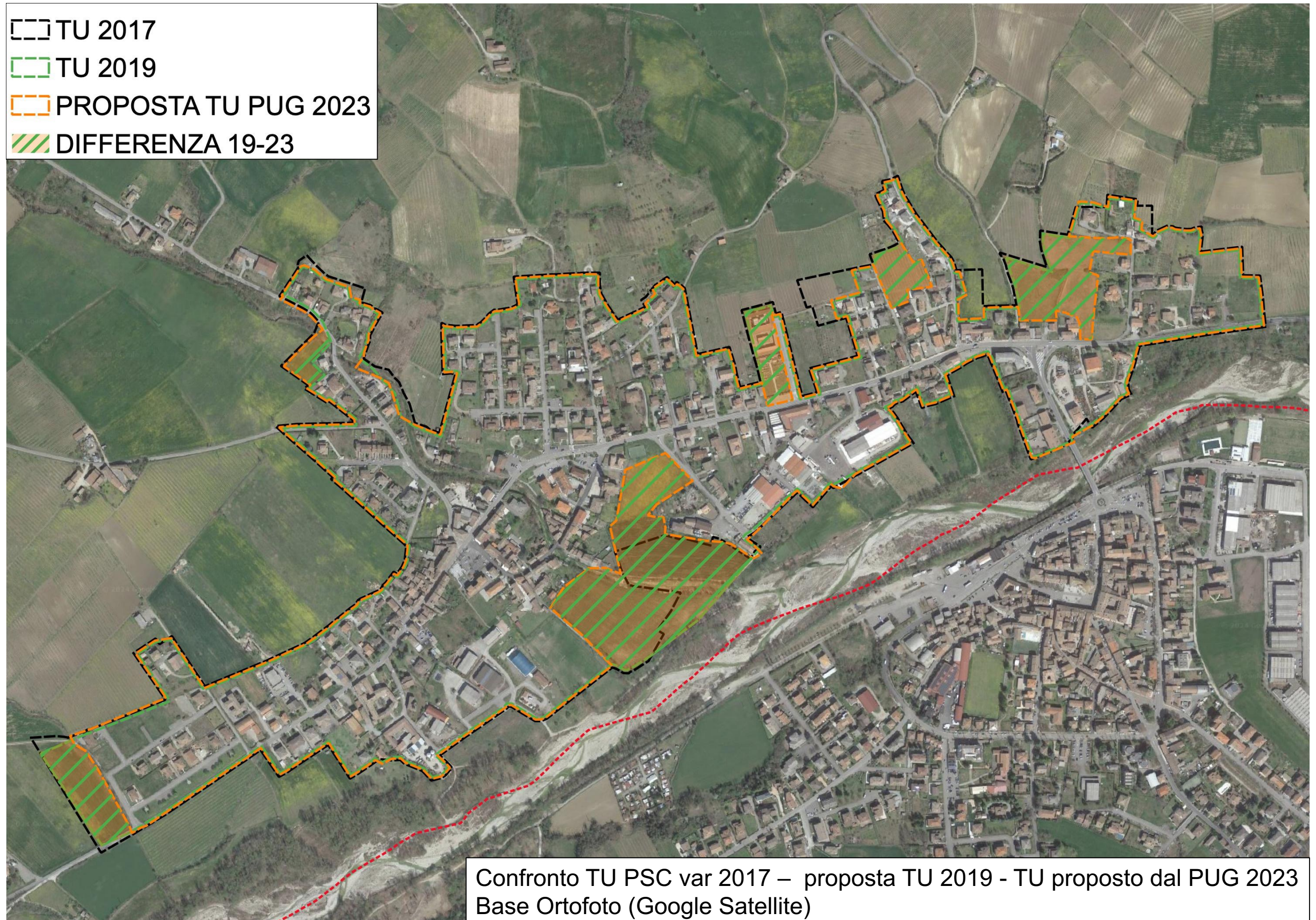
# STRÀ



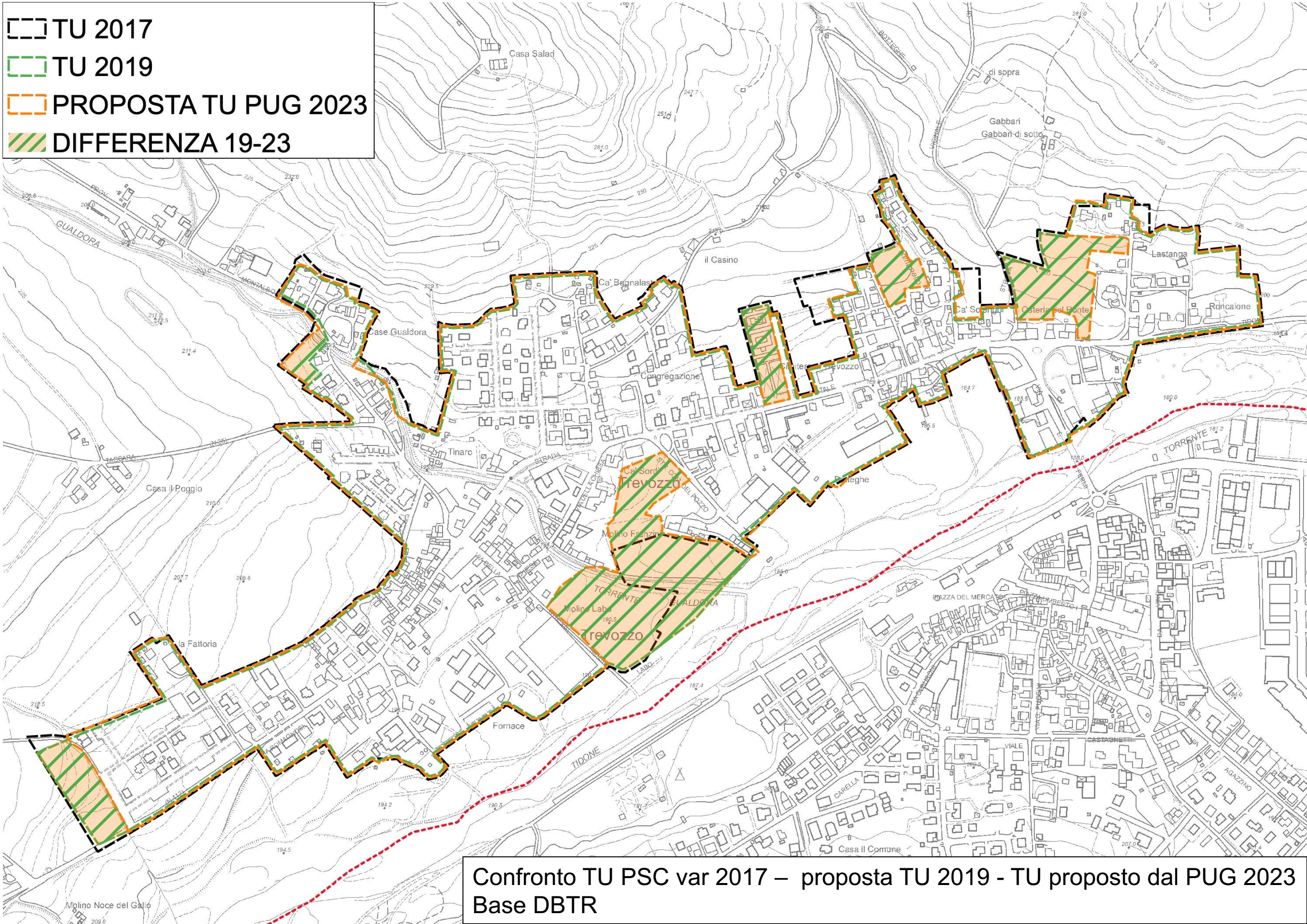
# STRÀ



# TREVOZZO

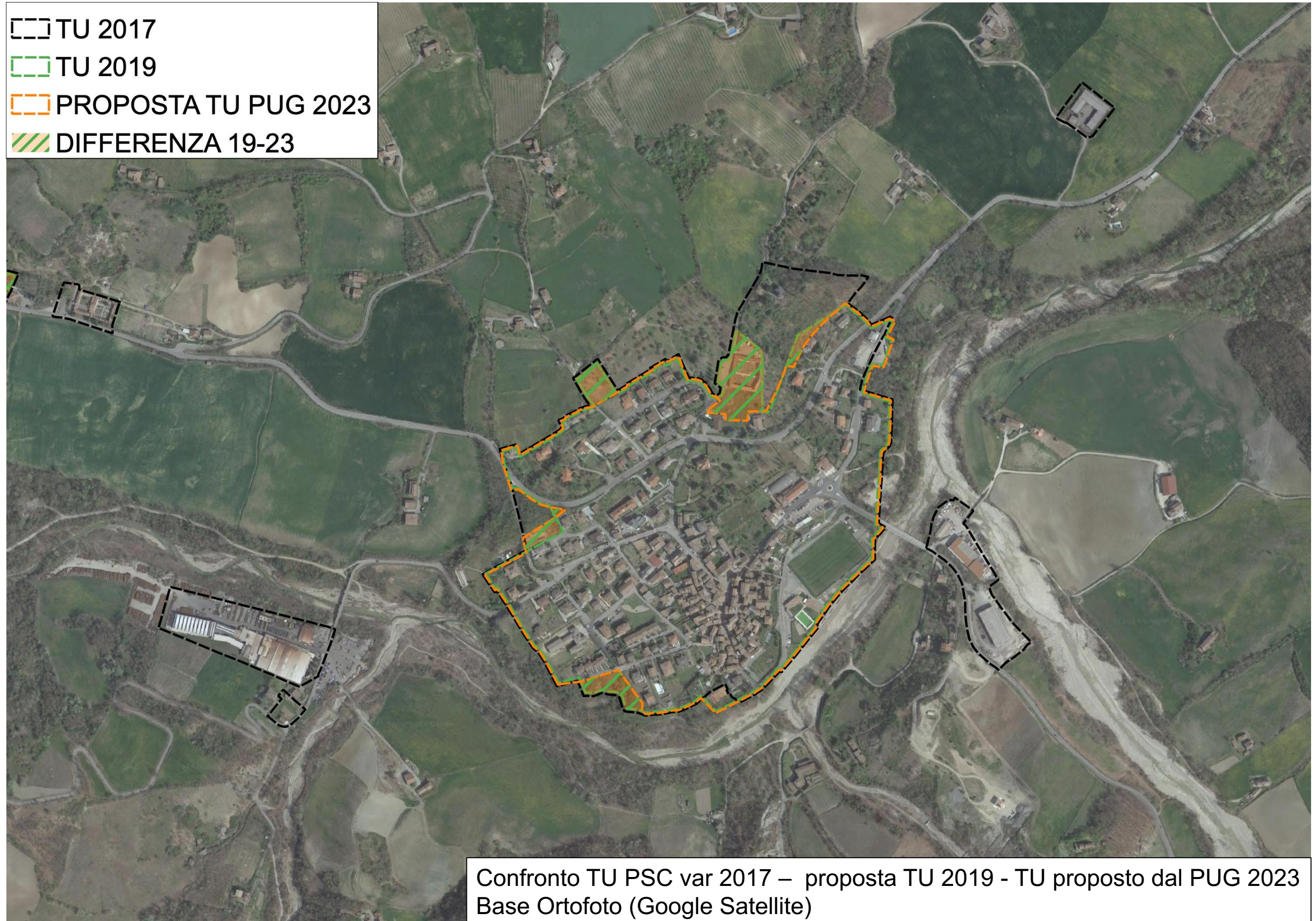


# TREVOZZO



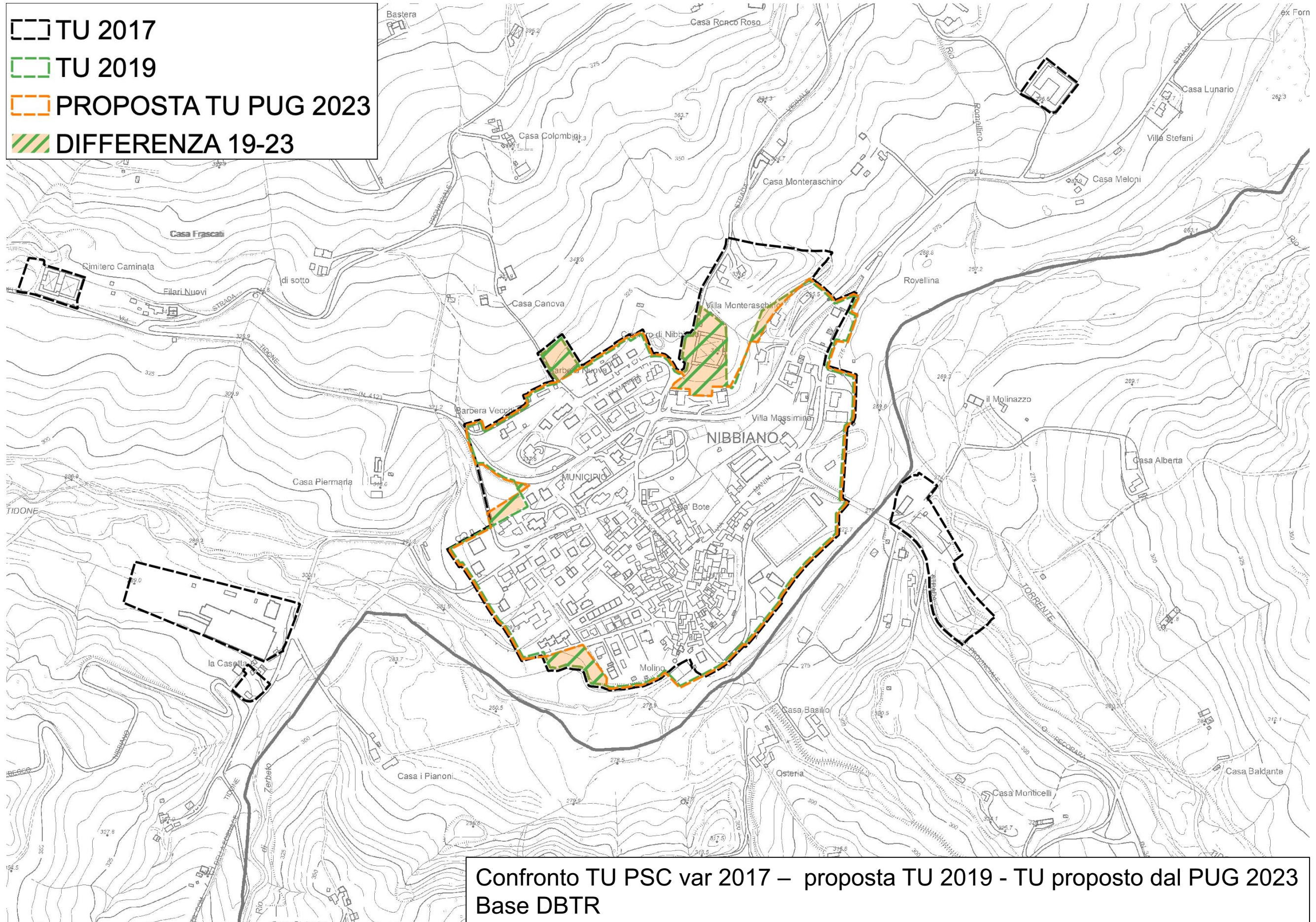
# NIBBIANO

- [- -] TU 2017
- [ ] TU 2019
- [ ] PROPOSTA TU PUG 2023
- [ ] DIFFERENZA 19-23



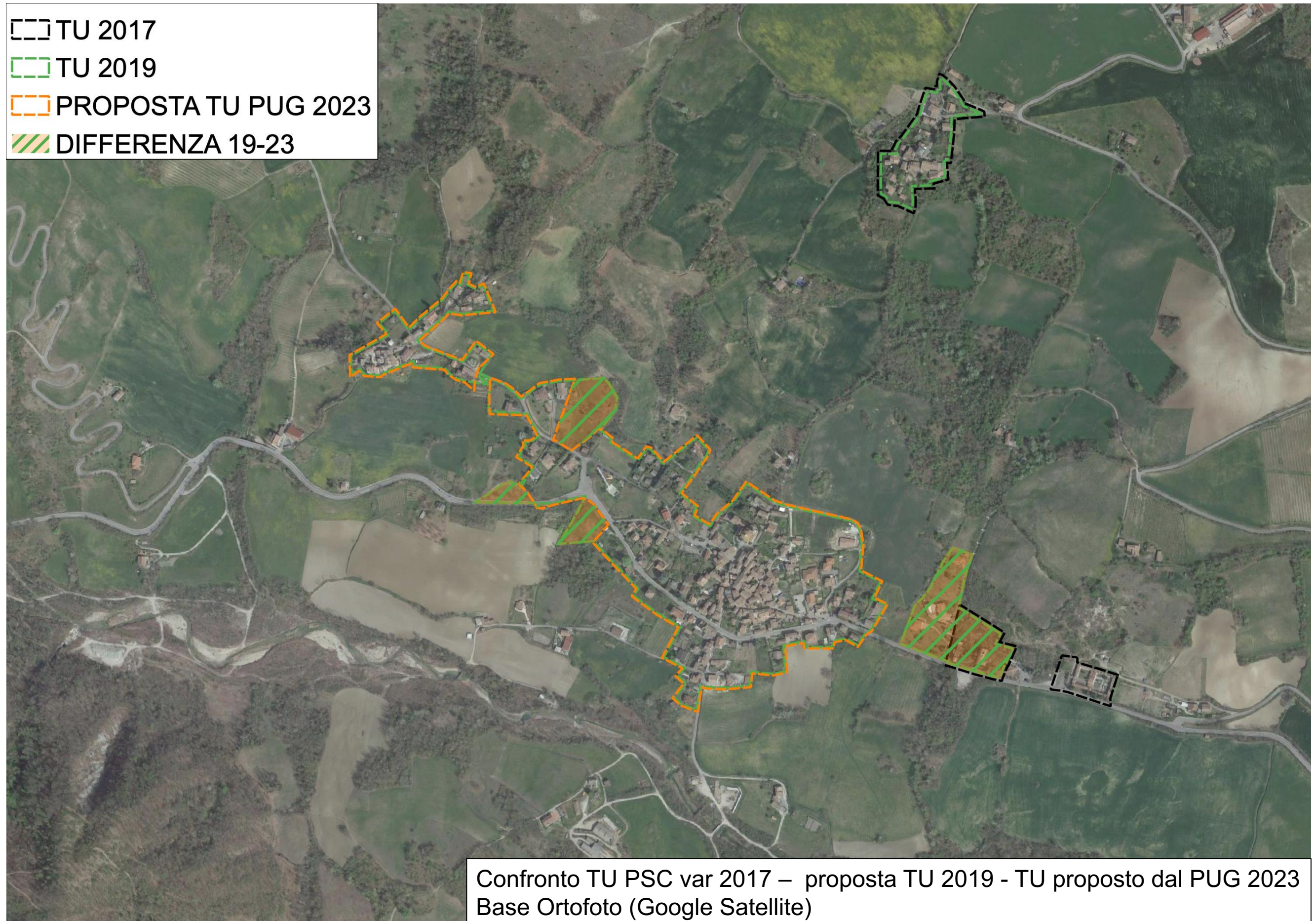
Confronto TU PSC var 2017 – proposta TU 2019 - TU proposto dal PUG 2023  
Base Ortofoto (Google Satellite)

# NIBBIANO



# CAMINATA

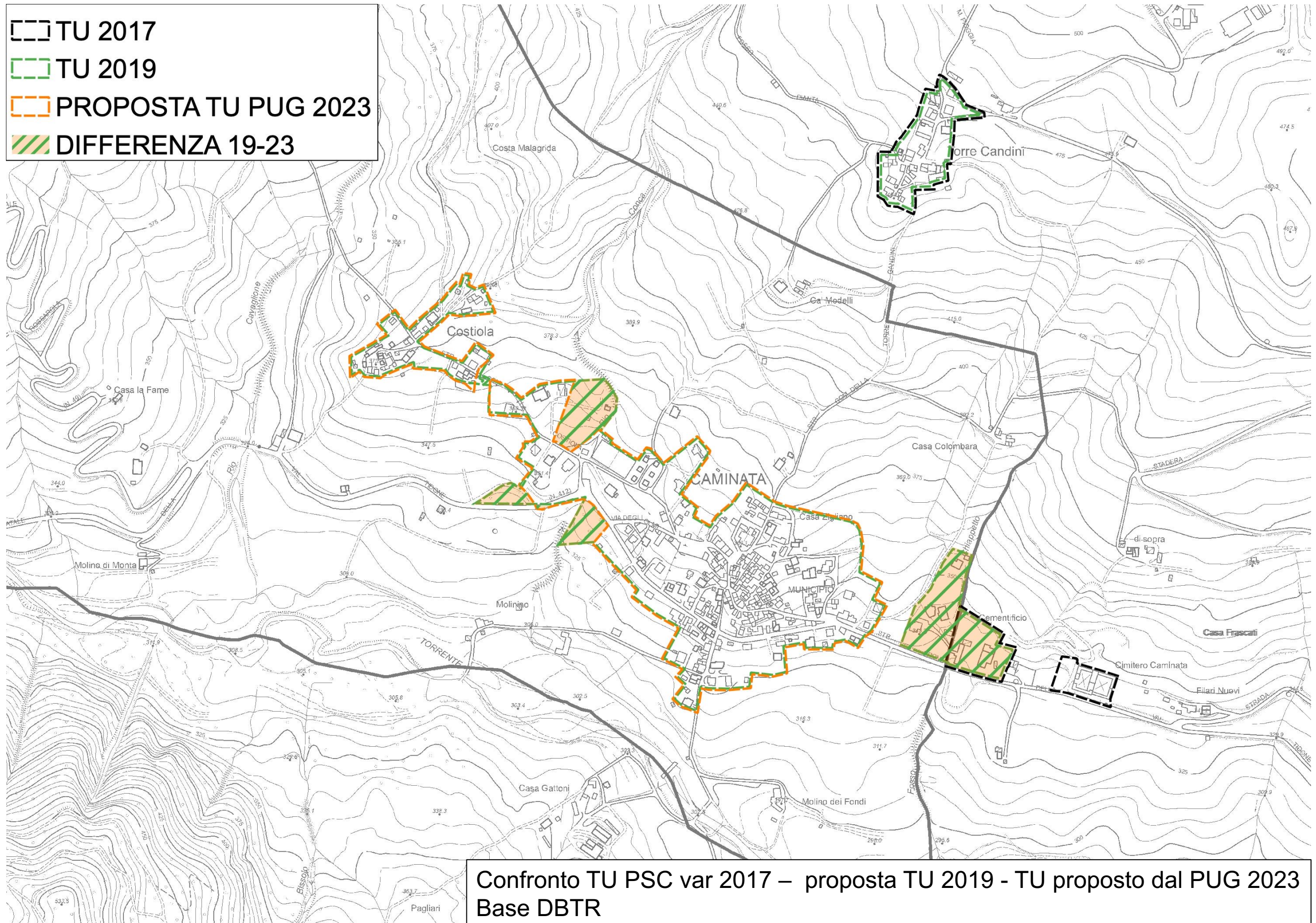
- [- -] TU 2017
- [- -] TU 2019
- [- -] PROPOSTA TU PUG 2023
- [/ /] DIFFERENZA 19-23



Confronto TU PSC var 2017 – proposta TU 2019 - TU proposto dal PUG 2023  
Base Ortofoto (Google Satellite)

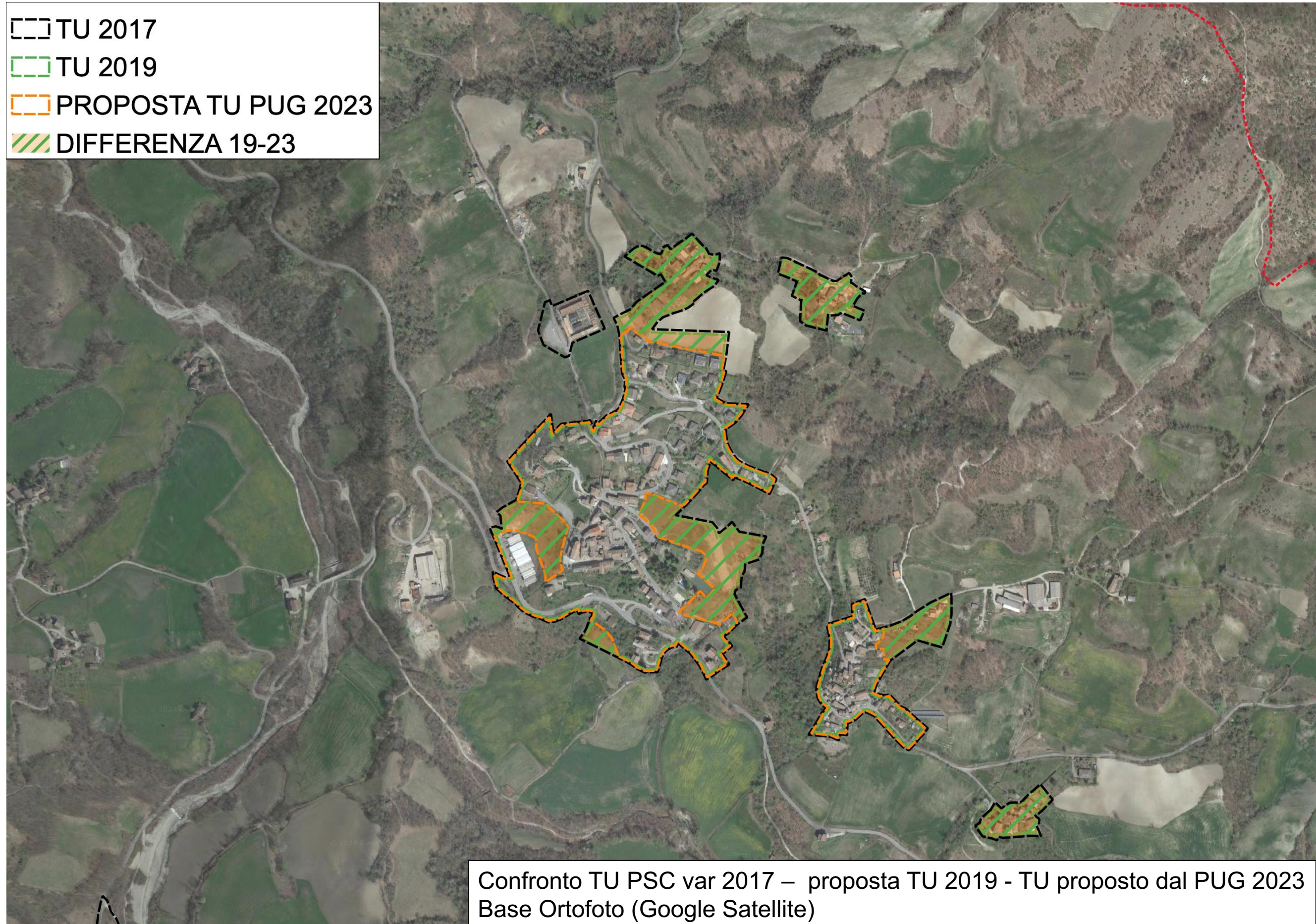


# CAMINATA



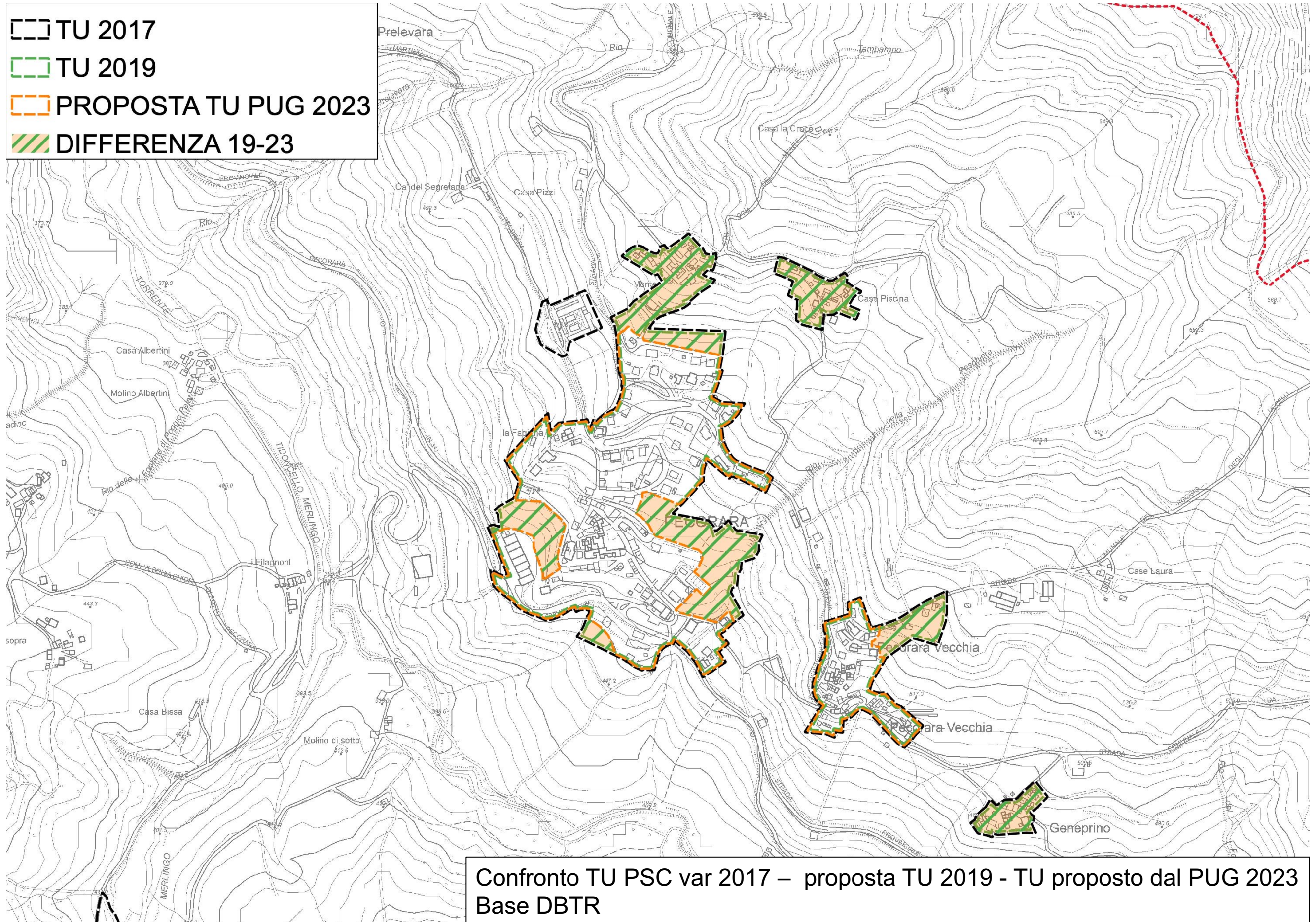
# PECORARA

- [- -] TU 2017
- [- -] TU 2019
- [- -] PROPOSTA TU PUG 2023
- [/ /] DIFFERENZA 19-23



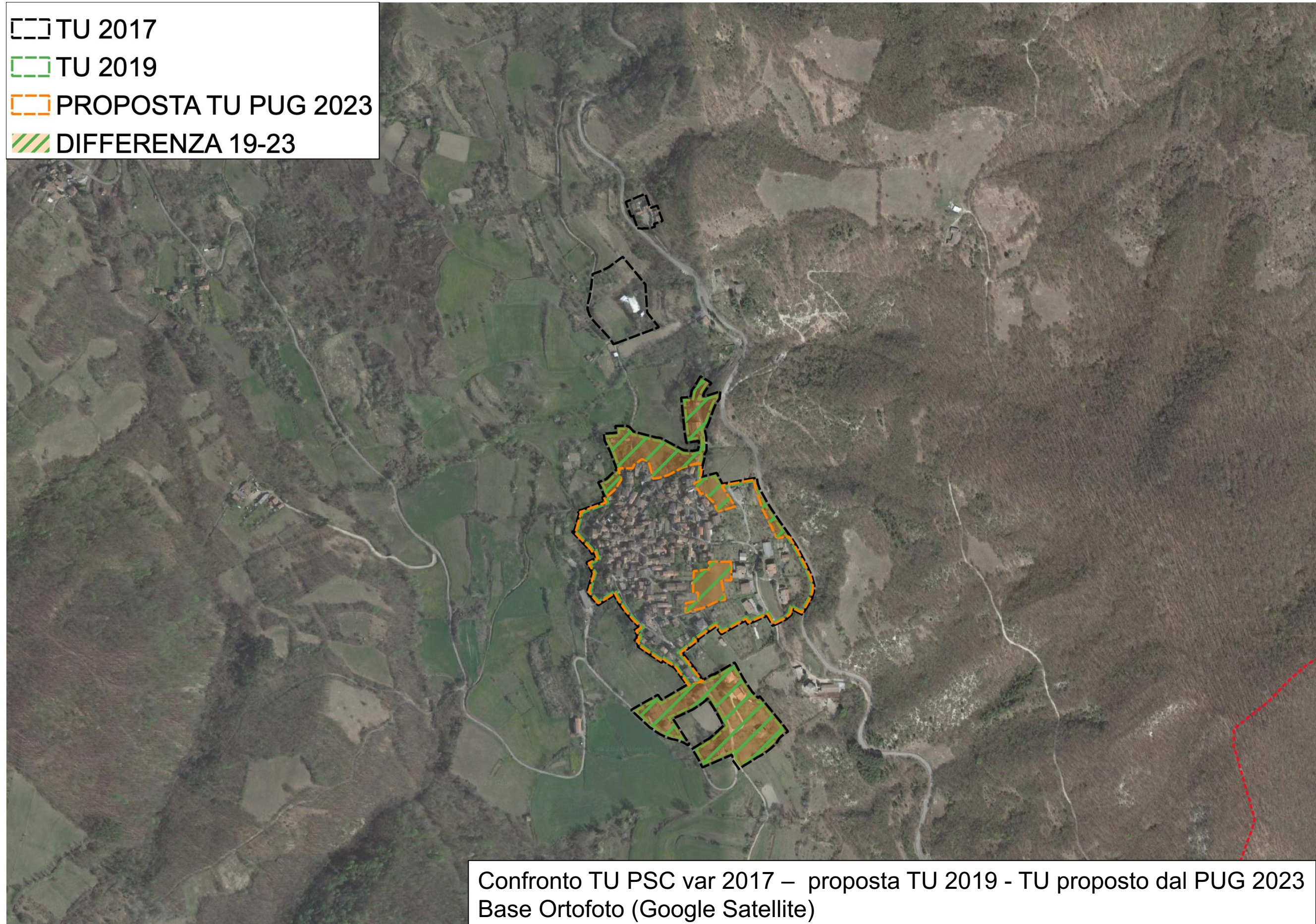
Confronto TU PSC var 2017 – proposta TU 2019 - TU proposto dal PUG 2023  
Base Ortofoto (Google Satellite)

# PECORARA



# CICOJNI

- [- -] TU 2017
- [- -] TU 2019
- [- -] PROPOSTA TU PUG 2023
- [/ /] DIFFERENZA 19-23



Confronto TU PSC var 2017 – proposta TU 2019 - TU proposto dal PUG 2023  
Base Ortofoto (Google Satellite)

# CICOJNI

